



Shenandoah® group nest

More nest space and increased profitability



- 1 Increases nest acceptance and reduces floor eggs**
 - / High and wide nest holes
 - / Full bottom AstroTurf mat
 - / Curtains to create shade and encourage social behaviour
- 2 Optimal nest and egg hygiene**
 - / Unique automatic expulsion system gently pushes hens out of the nest: very animal-friendly
 - / Stretch proof egg belt: no stretch and easy to clean
 - / Removable, perforated AstroTurf mat
 - / Streamlined nest transitions to the egg belt
- 3 Group nest for a higher stocking density**
 - / 8 nest holes: more efficient group areas
 - / Wider and deeper than an individual nest: **more usable nest space**
 - / Flat or leveled nest bottom or floor
 - / Increase the stocking density in an existing broiler breeder house: **+ 50% nest space and up to +30 hens/nest body**
- 4 A small step from individual to group house**
 - / No impact on the existing house layout and management
 - / Winchable nest
 - / Well ventilated nest

Increased nest acceptance

The Shenandoah® nest is the ultimate automatic nest system for houses with a Louisiana layout (US style). Most poultry farmers associate Shenandoah with the individual nest, which has been a market leader in the poultry world for decades.

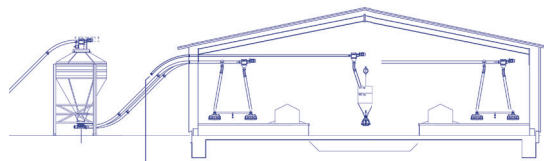
Since broiler breeders change on nesting behaviour, there is a need to switch to group nests with larger compartments. Now we combine the experience and knowledge to introduce a group nest to give birds a much more natural feeling.



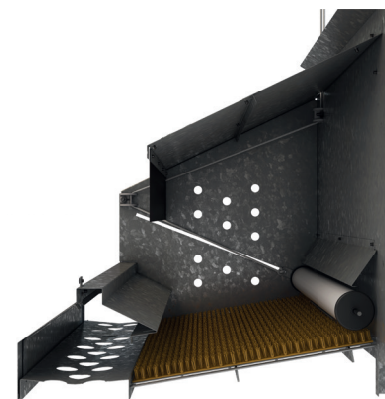
**+50 % nest space
up to +30 hens/nest body**

Technical info

	Typical conventional individual nest	Shenandoah group nest
Total nest body length	8' (96")	8' (96")
Total nest body width	34" – 38"	42"
Egg belt position	side belt or central belt	side belt
# holes / body	16 / 18 / 20	8
Hole width	9.5" / 10.7" / 12"	24"
Hole depth	12.25" / 13.3"	14.8"
Egg belt	4" side belt	5.5" side belt
Birds out of nest with	closing lid	expulsion system – unique!
Closing/expulsion system	option	yes
Suspended / winchable	yes	yes
Hole kit	turf pad / finger pad	AstroTurf pad
Hole curtains	no	yes
Perching woodbar	yes	no



Expulsion system with a bar that gently pushes the hens out of the nest and closes off the nest at night. A very **animal-friendly method** that is unique in the sector.



Interested?

Contact your Roxell distributor directly or go to www.roxell.com and click on 'Find distributor' to find a distributor near you.