

# Dos<sup>7</sup>

User's Guide



## TABLE OF CONTENTS

GENERAL INFORMATION .....	1
1. OBEY THE LEGAL REGULATIONS AND THE APPLICABLE RULES! .....	1
2. INTENDED USE .....	1
3. NOT-INTENDED USE .....	1
4. LIABILITY .....	1
5. PERSONNEL QUALIFICATIONS .....	1
6. INFORMATION ABOUT THE RESIDUAL RISKS - USED SAFETY SIGNS .....	1
7. DISMANTLING, STORAGE, TRANSPORT .....	2
8. THE LEVEL OF NOISE EMISSION .....	2
9. MAIN SWITCH .....	2
10. PROTECTION .....	2
GENERAL SAFETY RULES .....	3
OPERATOR'S GUIDE .....	4/5
MAINTENANCE INSTRUCTIONS .....	6
TROUBLE SHOOTING GUIDE .....	6
DECLARATION OF INCORPORATION OF PARTLY COMPLETED MACHINERY	

## GENERAL INFORMATION

### 1. OBEY THE LEGAL REGULATIONS AND THE APPLICABLE RULES!

This concerns, among other things, the European directives transposed into national legislation and/or the laws, safety and accident prevention regulations that apply in the user's country.

During assembly, operation and maintenance of the installation the legal regulations concerned and the applicable technical rules must be obeyed.

### 2. INTENDED USE

The installation has been designed solely for intensive livestock use and has been developed according to the applicable rules of good workmanship. Extra loading of the product is therefore prohibited. Any other use is considered to be improper use. The manufacturer is not responsible for damage resulting there from. The user bears sole responsibility.

### 3. NOT-INTENDED USE

All use different than described in point 2" intended use" is at the responsibility of the end user.

### 4. LIABILITY

Any claim under guarantee is void for damage that has resulted from improper use and unauthorised actions not provided for in the instructions for use. ROXELL NV cannot be held responsible for this damage.

This declaration relates exclusively to the machinery in the state in which it was placed on the market, and excludes components which are added and/or operations carried out subsequently by the final user.

The liability of Roxell ends in case the end user changes or adapts the installation himself.

### 5. PERSONNEL QUALIFICATIONS

#### USER:

The person who uses a function or operation of a product for their work or who works on the product. The user must be able to read the instructions for use and fully understand them. The user has knowledge of the functioning and construction of the installation.

#### TECHNICALLY TRAINED PERSON:

An expert who can assemble and maintain the installation (**mechanically/electrically**), and resolve malfunctions. On the basis of his/her technical training and experience, he/she has sufficient knowledge to be able to assess activities, recognise possible dangers and rectify dangerous situations.

### 6. INFORMATION ABOUT THE RESIDUAL RISKS - USED SAFETY SIGNS





There are three levels of danger, which you can recognize from the signal word

\* **DANGER**

\* **WARNING**

\* **CAUTION**

The nature and source of the imminent danger and possible consequences of not obeying warnings is stated here!

 <p><b>DANGER</b></p>	<p><b>DANGER</b> indicates a direct imminent danger that can result in a serious or even fatal accident if the safety measures are not respected.</p>
 <p><b>WARNING</b></p>	<p><b>WARNING</b> indicates a possible imminent danger that can result in a serious accident or damage to the product if the safety measures are not respected.</p>
 <p><b>CAUTION</b></p>	<p><b>CAUTION</b> indicates possible, dangerous situations that can result in minor physical injury or material damage if the safety measures are not respected.</p>
	<p>This symbol refers to supporting information.</p>

## GENERAL INFORMATION

### 7. DISMANTLING, STORAGE, TRANSPORT

Dismantle the installation and its components in accordance with the environmental legislation of the country or the local authorities applicable at that time. All functioning products and exchange parts must be stored and disposed of in accordance with the applicable environmental regulations.

#### Environmental information for customers in the European Union



European directive 2002/96/EC amended by the Directive 2008/34/EC requires that equipment that bears this symbol on the product or packaging must not be disposed of with unsorted household waste. This symbol indicates that the product must be disposed of separately. You are yourself responsible for the destruction of this and other electrical and electronic equipment via the disposal channels designated for that purpose by the national or local government. The correct destruction and recycling of this equipment prevents any negative consequences for the environment and health. For more information about destroying your old equipment, contact your local authorities or waste disposal service.

#### Information about waste disposal - electrical/electronic material for companies

##### 1. In the European Union

If you have used the product for commercial purposes and you want to dispose of it, contact Roxell N.V. who will give you information about the return of the product. It is possible that you will have to pay a disposal charge for the return and recycling. Small products (and small quantities) can be processed by the local collection agencies.

##### 2. In other countries outside the European Union

If you want to dispose of this product, contact the local authorities for information concerning the correct disposal procedure.

### 8. THE LEVEL OF NOISE EMISSION

The noise level of the installation in operation does not exceed 70dB.

### 9. MAIN SWITCH

Before you do any repair, or maintenance works, always disconnect the electricity supply **by switching off the main switch.**

### 10. PROTECTION

Ensure you wear personal protection equipment (gloves, dust masks...).

**THESE INSTRUCTIONS MUST BE READ, UNDERSTOOD AND ALL POINTS OBSERVED BY THE USER, THE RESPONSIBLE AND OPERATING PERSONNEL.**

**DISCLAIMER :** The original, authoritative version of this manual is the Dutch version produced by Roxell NV. Subsequent changes to any manual made by any third party have not been reviewed nor authenticated by Roxell. Such changes may include, but are not limited to, translation into languages other than Dutch, and additions to or deletions from the original content. Roxell disclaims responsibility for any and all damages, injuries, warranty claims and/or any other claims associated with such changes, inasmuch as such changes result in content that is different from the authoritative Roxell-published Dutch version of the manual. For current product installation and operation information, please contact the customer service and/or technical service departments of Roxell. Should you observe any questionable content in any manual, please notify Roxell immediately in writing to: Roxell NV - Industrielaan 13, 9990 Maldegem - Belgium.

## GENERAL SAFETY RULES

### Dos7

#### Automatisch voedersysteem voor individueel gehuisveste zeugen

Automatic feeding system for individual sow feeding



## IMPORTANT

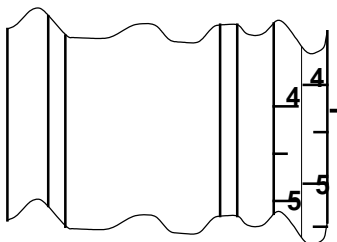
Carefully read the following instructions before  
**USING** the system

DANGER

1. Before you do any **repair**, or **maintenance works**, always **disconnect the electricity supply**.
2. Ensure you wear **personal protection equipment** (gloves, dust masks).
3. With normal use the opening system **starts automatically**.  
**Never** put your **hands** on opening tubes or cables before you have **completely switched off** the transport system and made sure that **nobody** can **switch it on** without your knowledge.
4. **Never** allow **unauthorized persons** to **enter the house** in your absence.
5. If the opening system stalls : **immediately** switch **off** the system. Carefully read the trouble shooting guide and strictly follow instructions. Contact a **technically trained person**.  
An cable **under tension** can **cause very serious injuries** when breaking.
6. Regularly check the **cable and tube connections**. Tighten if necessary.
7. Regularly check that the **motor handy box** is properly closed.

## TO ADJUST THE AMOUNT OF FEED

- First you need to calibrate the scale [liter] with your special feed, because the scale is an indicative one (look next page).
- Use the **white** scale for **pellets** and the **yellow** scale for **mash**.
- Move the slide to the desired amount of feed.
- Example for pellets : to feed 2 kg pellets, you set the slide handle at 3,2 litres on the white scale.
- You adjust the same quantity for each group.



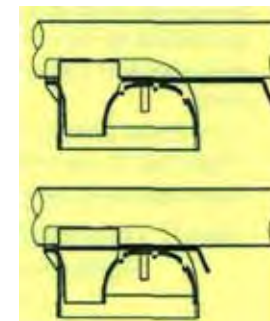
**ATTENTION ! DO NOT adjust the amount of feed unless the dispenser is empty.**

## ADMINISTERING MEDICINES

- You can administer solid medicines to each sow.
- Open the window in the front panel of the dispenser.
- Add the medicines to the feed in the dispenser.
- Close the window again.

## TO SHUT OFF THE DISPENSERS

- **If a sow pen is empty or will become empty**, shut off the dispenser with the shut-off slide.
- Do this **when the dispenser is filled for the last meal or after the last meal, before filling the dispenser again.**
- You can disconnect the feed supply system (on the central control panel).
- If the dispenser is filled and there is no sow : **detach the cord of the opening pear** from the opening tube (or cable). Use a screwdriver to loosen the clamp.



## TO CLEAN THE DISPENSER

- Stop the feed supply system (control on the central control panel).
- Open the window after a meal.
- Clean **the inside and the outside** of the dispenser (max. 25 Bar).
- Hang the pear **outside** the dispenser.
- Let the dispenser and the drop tube dry completely.
- Close the window and restart the feed supply system.

## USING A CONTROL DISPENSER

- If you use a control dispenser to stop the feed supply system, take care that there are always sows in that compartment.



# OPERATOR'S GUIDE



## CALIBRATION OF THE DISPENSER

The indication of the volume on the ROXELL N.V. dispenser for mash and pellets is an **indicative scale** and can differ from the usage of your specifically used feed.

For an exact feed dosage ROXELL N.V. recommends to calibrate the scale of the dosage with your specific feed before production.


- Use a dispenser which is installed on your feeding system.
- Choose an indicative scale on the dispenser on the feed (mash or pellets) in use.
- Place the slide handle on the chosen scale at 1 l and fill the dispenser by the filling system.
- Empty the dispenser and weigh the feed quantity. Note this on the calibration table (look below).
- Repeat this procedure 5 times in total for the same volume.
- The average of these 5 measurements reflects the real dosage of your feed at the chosen scale of the ROXELL N.V. dispenser.
- Repeat with other volumes (1l. → 7l) .

**REMARK:** Repeat this procedure, if you change the type of feed.

TABLE OF CALIBRATION

Measurement	1	2	3	4	5	Calibration Weight
Scale Dispenser						Average
1 l						
2 l						
3 l						
4 l						
5 l						
6 l						
7 l						

### MAINTENANCE INSTRUCTIONS

 <b>DANGER</b>	<b>Switch off the current first. Use protection</b>	6-monthly
<b>ACTIONS IN GREY BACKGROUND MUST BE DONE BY A TECHNICALLY TRAINED PERSON.</b>		
1. Power unit		
- Make fan dust-free		<b>X</b>
- Check possible damages to electrical wiring		<b>X</b>
2. Dos7		
- Check possible damages		<b>X</b>

### TROUBLE SHOOTING GUIDE



**DANGER**

**Switch off the current first. Use protection**

<b>ACTIONS IN GREY BACKGROUND MUST BE DONE BY A TECHNICALLY TRAINED PERSON.</b>		
PROBLEM	CAUSE	CORRECTIVE ACTION
1. Opening system does not operate.	”On-off” switch not on ”I”.	Adjust switch.
	”Up” switch does not work.	Check switch.
	Thermic switching off of the motor.	Orange lamp lights. Check thermic protection. Measure phase current.
2. Opening system keeps running upwards.	Striking of end switches has come loose.	Check end switches.
3. No feed in the dispenser.	Shut off slide not open.	Open the shut off slide.
4. No feed in the trough.	Opening system does not operate. Obstruction in the drop tube.	See 1. Clean drop tube.
	Dispenser not closed (dump ball not on bottom).	Check and fix the cord to the opening tube.



**Inbouwverklaring betreffende niet voltooide machines** (Richtlijn 2006/42/EG, Bijlage II.1.B)  
**Declaration of incorporation of partly completed machinery** (Directive 2006/42/EC, Annex II.1.B)

Fabrikant/Manufacturer:  
Roxell, Industrielaan 13, 9990 Maldegem  
Tel: +32 50 72 91 72  
Fax: +32 50 71 67 21

Verklaart geheel onder eigen verantwoordelijkheid dat het product:  
Declares on its own responsibility that the product:

Dos7 Nr: 040...  
Automatisch voedersysteem voor individueel gehuisveste zeugen.  
Automatic feeding system for individual sow feeding.

Waarop deze verklaring betrekking heeft, in overeenstemming is met:  
- de volgende richtlijnen: 2006/42/EG (Machinerichtlijn); 2004/108/EG (Elektromagnetische Compatibiliteit).  
- de geharmoniseerde Europese Normen: EN ISO 13857:2008; EN 349:1993 + A1:2008; EN ISO 12100:2010; EN 60204-1:2006

**Het is verboden bovengenoemd product in gebruik te stellen voordat de machine waarin het wordt ingebouwd in overeenstemming met de bepalingen van de Machinerichtlijn is verklaard.**

Tevens verbindt de fabrikant (of zijn gemachtigde) zich om op met redenen omkleed verzoek van de nationale autoriteiten de relevante informatie over deze niet voltooide machine door te geven. De wijze van doorgifte is digitaal. De wijze van informatieverschaffing laat de intellectueel-eigendomsrechten van de fabrikant van de niet voltooide machine onverlet  
(NL)

Relating to this declaration, is conform  
- The following directives 2006/42/EC (Machinery Directive); 2004/108/EC (Electromagnetic Compatibility).  
- The harmonised European standards: EN ISO 13857:2008; EN 349:1993 + A1:2008; EN ISO 12100:2010; EN 60204-1:2006

**This product must not be put into service until the machinery into which it is to be incorporated has been declared in conformity with the provisions of the Machinery Directive.**

The manufacturer (or its agent) also undertakes, at the duly reasoned request of the national authorities, to provide the relevant information concerning this partly completed machinery. The method of transmission will be digital. The manner in which the information is provided does not prejudice the manufacturer's intellectual property rights concerning the partly completed machinery.  
(EN)

04005260

Plaats, Datum / Place, Date : Maldegem, 01/01/2012

.....  
Dhr. Gino Van Landuyt  
Managing Director

“This part may only be filled out if all built-in subparts are delivered by Roxell”

**EG-verklaring van overeenstemming** (Richtlijn 2006/42/EG, Bijlage II.1.A)  
**EC-declaration of conformity** (Directive 2006/42/EC, Annex II.1.A)

Wij/We \_\_\_\_\_  
(naam installateur/name fitter)  
\_\_\_\_\_  
(volledig adres en land/complete address)

Verklaren geheel onder eigen verantwoording de  
Declare completely on own justification that

\_\_\_\_\_  
(naam machine/name machinery) (nummer CE-label/number CE-label)

In een installatie te hebben ingebouwd geheel volgens de Roxell-voorschriften en in overeenstemming met de bepalingen van de Machinerichtlijn.  
Has been incorporated in conformity with the provisions of the Machinery Directive and the prescriptions of Roxell NV

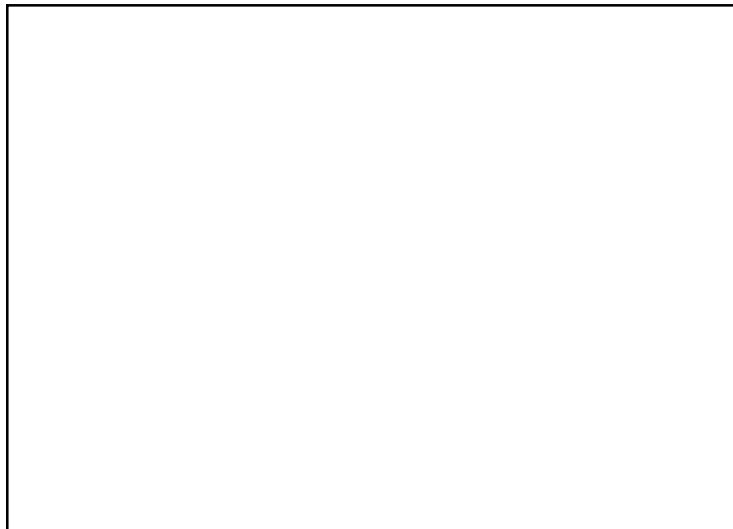
\_\_\_\_\_  
(plaats, datum/place, date) (naam, handtekening/name, signature)

Deze verklaring betreft uitsluitend de machine in de toestand waarin zij in de handel is gebracht, met uitsluiting van de later door de eindgebruiker toegevoegde componenten en/of verrichte bewerkingen.

This declaration concerns solely the machinery in the condition in which it has been brought onto the market, excluding components added and/or modifications made later by the end user.







ROXELL NV Belgium, Industrielaan 13, 9990 Maldegem, Belgium  
Tel: +32 50 72 91 72 - fax: +32 50 71 67 21 - E-mail: roxell@roxell.com - www.roxell.com

ROXELL - Millenium House, 5th Floor, Ul. Trubnaya 12, 107045 Moscow, Russian Federation  
Tel. +7 495 795 06 57 - Fax +7 495 795 06 32 - E-mail: info.russia@roxell.com\_ - www.roxell.ru

ROXELL Malaysia, No. 12 Jalan Anggerik Mokara31/48, Kota Kemuning Industrial Park,  
40460 Shah Alam, Selangor, Malaysia  
Tel: +603-5121 7150 - Fax: +603-5121 7146 - Email: info@roxell.com.my - www.roxell.com.my